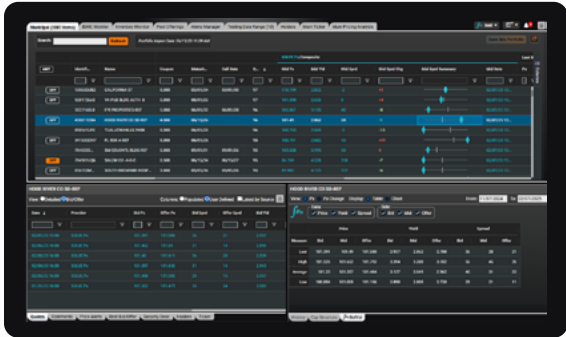




Save time. Reduce risk. Build your business.

# SOLVE Relative Value Analysis

Value Squared: Superior Fixed Income Decisions with Advanced Analytics



**SOLVE Quotes™** and **SOLVE Px's™** users can now effortlessly assess and visualize the dynamic changes in a bond's value over time, thanks to enhanced SOLVE Px capabilities. Currently available for municipal bonds, this groundbreaking tool will soon extend its coverage to additional asset classes. Elevate your trading strategies and capitalize on market movements with unparalleled precision.

## About Relative Value Analysis

- Fixed income specialists benefit from superior analytics to drive trading workflows, understand price richness, and compare various metrics like **price, spread and yield values**.
- Configure, search and filter detailed price, spread, and yield values over various periods for specific bonds to gain valuable insights.
- Enhance decision making by quickly assessing if bonds are rich or cheap to make informed investment choices.

## This Feature Supports

- Buy-Side Traders:** to identify potential trading opportunities.
- Sell-Side Traders:** to enrich client conversations with meaningful analytics.
- Portfolio Managers:** to analyze portfolio positions.
- Risk Managers:** to locate crucial data on spread changes.

## Optimal Use Cases

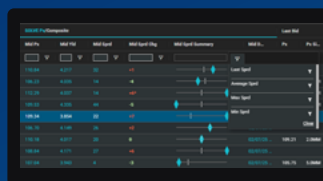
- Quickly determine whether bonds are rich or cheap, relative to themselves over a given time frame. This comparison will lead to better informed decision-making about buying, holding, or selling the bond based on its predicted trade value.
- Analyze portfolio positions to look for relatively rich or cheap positions, or to find positions with significant price movements.
- Easily identify price trends and anomalies over specific date ranges to make informed trading decisions and stay ahead of the market.

## Relative Value Analysis: The Power of Configurability

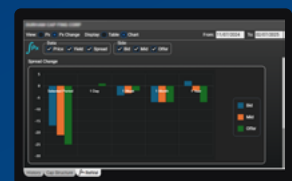
Display each bond's change in SOLVE Px for **price, yield and spread over a selected timeframe.**

Mid Px Chg	Mid Spnd Chg	Mid Yld Chg
+0.845	-5	-0.140
+0.786	-10	-0.192
+0.333	+1	-0.086
+0.343	+6	-0.031
+0.478	-36	-0.028

Find opportunities by filtering **bonds** by their last SOLVE Px, relative to the average, minimum, or maximum value over time.



View grids and charts based on the SOLVE Px data available for the selected security.



## FEATURES AND BENEFITS

The SOLVE Px History tab delivers, for a particular bond, detailed and organized price, spread, and yield values for each side of the market (bid, mid, offer) over various time periods, empowering our clients with the insights needed for more-informed trading decisions.

**Enhance Decision Making**  
Quickly assess if bonds are rich or cheap to make informed investment choices.

**Configure, Search & Filter**  
View detailed price, spread, and yield values over various periods for specific bonds to gain valuable insights.

**Identify Trading Opportunities**  
Easily identify price trends and anomalies over specific date ranges to make informed trading decisions and stay ahead of the market.

## ABOUT SOLVE

SOLVE is the leading market data platform provider for Fixed Income securities, trusted by sophisticated buy-side and sell-side firms worldwide. Founded in 2011, SOLVE leverages its AI-driven technology and deep industry expertise to offer unparalleled transparency into markets, reduce risk, and save hundreds of hours across front-office workflows. With the largest real-time datasets for Securitized Products, Municipal Bonds, Corporate Bonds, Syndicated Bank Loans, Convertible Bonds, CDS, and Private Credit, SOLVE empowers clients to transform the way they bring new securities to market, trade on secondary markets, and value highly illiquid securities. Headquartered in New York, with offices across the globe, SOLVE is the definitive source for market pricing in Fixed-Income markets.



**SOLVE**

[info@SOLVEfixedincome.com](mailto:info@SOLVEfixedincome.com)

646.699.5041

[www.SOLVEfixedincome.com](http://www.SOLVEfixedincome.com)

SCAN CODE  
FOR MORE  
ON SOLVE  
RELATIVE  
VALUE  
ANALYSIS

