



SOLVE Relative Value Analysis™ for Traders

Cohort-based. Configurable. Actionable.

Buy-side traders evaluate thousands of bonds each day under tight time pressure. SOLVE Relative Value Analysis helps them move faster by combining SOLVE Px™ predictive pricing with live market quotes from SOLVE Quotes™, making it easier to assess whether a bond looks rich or cheap relative to peers and act on market opportunities.

How SOLVE Redefines Relative Value Analysis:

Bond vs. Bond

Foundational relative value view for evaluating specific trade ideas.

Bond vs. Cohort

Evaluate a bond against a dynamically generated peer group with similar characteristics.

Cohort vs. Cohort

Compare one market segment against another to identify where value may be building.

These enhancements help traders identify which bonds may offer the most attractive opportunity, validate buy and sell decisions more efficiently, and move from comparison to action with greater speed.

Why It Matters

- Faster time to conviction across thousands of potential securities
- More actionable insight by connecting relative value to live bids and offers
- Greater confidence in volatile markets with analytics grounded in current market signals
- More consistent decision-making across the desk
- A clearer path from analysis to execution with fewer manual checks and comparisons

Use Cases

- Identify whether a bond is cheap or rich relative to a relevant cohort
- Compare bond vs. bond and bond vs. cohort opportunities
- Validate buy and sell decisions intraday
- Find more attractive alternatives already trading in the market
- Surface opportunities aligned with existing portfolio positions

The Power Behind the Analytics

SOLVE Quotes™

30M+

Unique Daily Quotes

SOLVE Px™ | Corporate Bonds

250,000+

Recent Coverage and
AI Predictive Trade Prices

SOLVE Px™ | Municipal Bonds

1.1M+

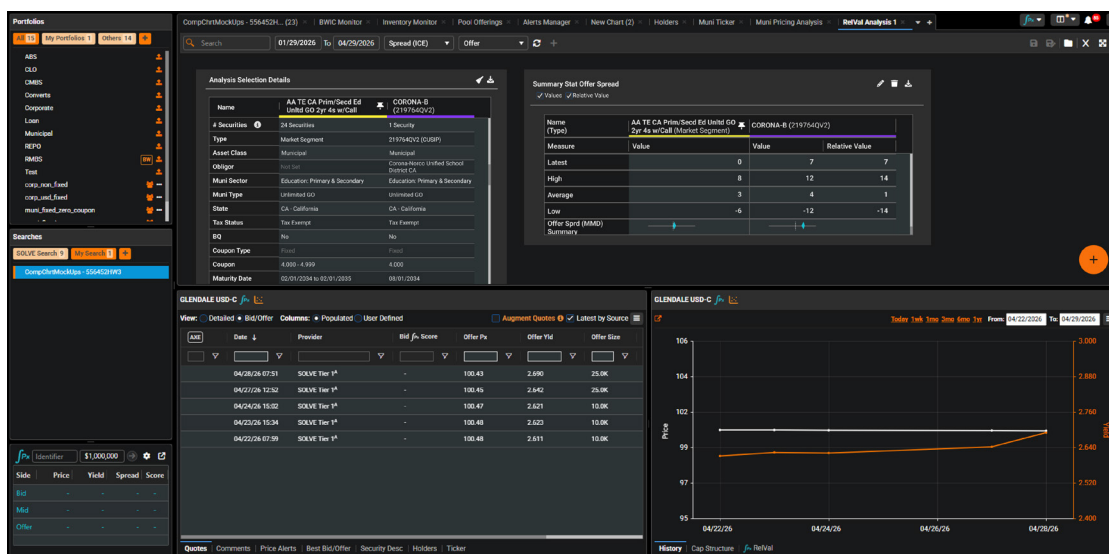
Recent Coverage and
AI Predictive Trade Prices

These analytics are more actionable because they combine SOLVE Px, our real-time predictive pricing, with SOLVE Quotes, our pre-trade market data. While many tools can indicate whether something looks rich or cheap in theory, this approach helps portfolio managers evaluate relative value in the context of current market signals and make more informed capital allocation decisions.

SOLVE Quotes: transforming live pre-trade market activity into structured intelligence that adds execution context to relative value analysis.

SOLVE Px: AI-driven predictive pricing engine giving traders a data-driven view of where a bond should trade, and helping them assess relative value with greater precision and timeliness.

A New Framework For Relative Value Analysis



See relative value through the combined lens of predictive pricing and live market quotes – helping traders evaluate bonds, compare cohorts, and identify actionable opportunities faster.

Flexible, streamlined delivery via: **SOLVE Quotes Web App** **FTP** **FIX** **API**

SOLVE Relative Value Analysis for Traders

A real-time decision framework for fixed income relative value, powered by SOLVE Quotes and SOLVE Px.



info@SOLVEfixedincome.com
646.699.5041
www.SOLVEfixedincome.com

SCAN CODE
FOR MORE ON
**SOLVE RELATIVE
VALUE ANALYSIS**



Disclaimer: SOLVE offerings are not intended to constitute investment advice, do not seek to value any security, and do not purport to meet the objectives or needs of specific individuals or accounts.