



SOLVE Relative Value Analysis

See Rich vs. Cheap Bonds with Clarity and Confidence

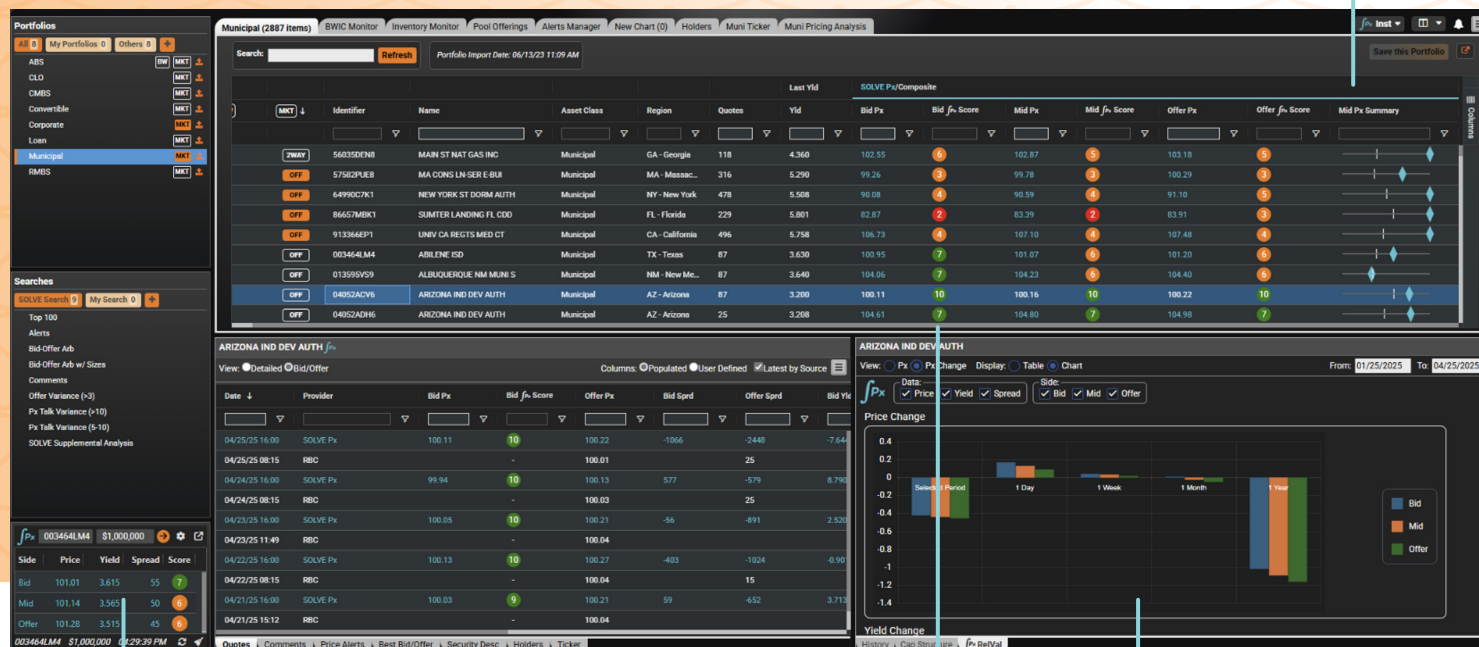
SOLVE Relative Value Analysis shows when bonds trade expensive or cheap — and why. By combining SOLVE Px™ predictive levels, observable quotes, and historical spreads, professionals gain the clarity to compare holdings, uncover value, and trade smarter.

Why It Matters

- **See Rich vs. Cheap Clearly:** Spot relative value opportunities across issuers, sectors, and vintages.
- **Act in Seconds:** Filter by price, yield, spread, or SOLVE Px levels to move faster than the market.
- **Make Confident Calls:** Back decisions with SOLVE Px predictive pricing and confidence scoring.
- **Elevate Client Dialogue:** Share transparent visual analytics that build trust.

From Pricing Data to Relative Value Insight

Relative Value Analysis



Pop-out module to minimize screen real-estate

Predictive Px Bid and Px Offer with Confidence Score

View Px Over Time for a Bond

Shown: SOLVE Quotes™ with SOLVE Px™, Confidence Score, and Relative Value Analysis

Reveal pricing trends, spreads, and anomalies over time.

The SOLVE Advantage

- Compare price changes across any timeframe.
- Visualize historical pricing trends, spreads, and anomalies.
- Screen by sector, vintage, or structure to form peer cohorts.
- Run “what-if” scenarios for any CUSIP or trade size.
- Quantify confidence with SOLVE Px bid/offer scoring.
- Seamlessly integrated with SOLVE Quotes™ and SOLVE Px.

Who Uses It

- **Traders (Buy- & Sell-Side):** Spot rich/cheap bonds and defend trade levels.
- **Portfolio Managers:** Compare holdings and rotate across sectors or vintages.
- **Quants & Analysts:** Incorporate pricing trends and anomalies into strategies.
- **Risk Teams:** Monitor spreads and pricing shifts for oversight.

Clarity in Action

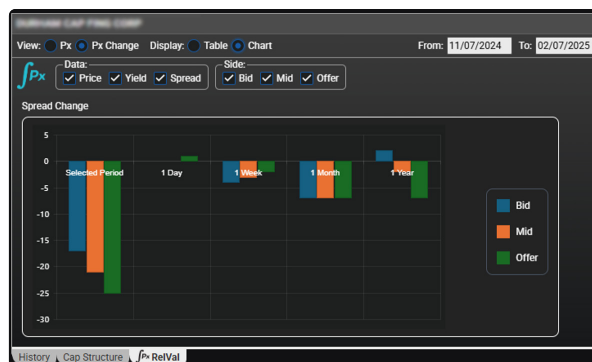
SOLVE Relative Value Analysis turns complex pricing data into clear, visual intelligence — enabling professionals to compare bonds, spot rich vs. cheap opportunities, and move faster in the market.

SOLVE Px		
Mid Px Chg	Mid Sprd Chg	Mid Yld Chg
<input type="text"/>	<input type="text"/>	<input type="text"/>
+0.845	-5	-0.140
+0.786	-10	-0.192
+0.333	+1	-0.086
+0.343	+6	-0.031
+0.498	-36	-0.438

See each bond's SOLVE Px, yield, and spread change across any timeframe.

SOLVE Px/Composite									
Mid Px	Mid Yld	Mid Sprd	Mid Sprd Chg	Mid Sprd Summary	Mid D...	Px	Px SL...	Last Bid	
<input type="text"/>	<input type="text"/>	<input type="text"/>	<input type="text"/>	<input type="text"/>	<input type="text"/>	<input type="text"/>	<input type="text"/>	<input type="text"/>	<input type="text"/>
110.84	4.217	32	+1					Last Sprd	
106.23	4.035	14	-4					Average Sprd	
112.29	4.037	14	+6*					Max Sprd	
109.53	4.335	44	-5					Min Sprd	
109.34	3.854	22	+7						Clear
106.70	4.149	26	+2						
110.18	4.017	20	0		02/07/25 ...	109.21	2.0MM		
108.84	4.171	27	+6		02/07/25 ...				
107.04	3.943	4	-3		02/07/25 ...	105.75	5.0MM		

Filter bonds against averages, highs, and lows to spot rich or cheap levels.



Compare bonds with clear charts and grids to highlight relative value.



info@SOLVEfixedincome.com
646.699.5041
www.SOLVEfixedincome.com

Disclaimer: SOLVE offerings are not intended to constitute investment advice, do not seek to value any security, and do not purport to meet the objectives or needs of specific individuals or accounts.

SCAN CODE
FOR MORE ON
**SOLVE RELATIVE
VALUE ANALYSIS**

